



Exd
Exe

Coldflow

Aplicação / Application

Áreas classificadas. Utilização em cabos elétricos armados com recurso cold-flow aplicados em caixas de junção, painéis, tomadas industriais, instrumentos, luminárias, entre outros equipamentos que exijam proteção Ex.

Classified areas. Use in armed electrical cables with cold-flow feature applied in junction boxes, panels, industrial sockets, instruments, luminaires, among other equipment that require Ex protection.

Descrição do produto

Prensa cabo tipo E1F metálico, com recurso COLD-FLOW, para cabos elétricos armados.

Material: Alumínio, aço inox ou latão niquelado;

Anel de vedação: Silicone;

Rosca: Ver tabela;

Prensagem: Coldflow;

Normas técnicas: ABNT NBR IEC 60079-0/1/7/31, ABNT NBR IEC 60529;

Obs: Recurso cold flow por diafragma.

Product description

Cable gland type E1F metallic with COLD-FLOW feature, armed electrical cables.

Material: Aluminum, stainless steel or nicked brass;

Sealing ring: Silicone;

Thread: See table;

Pressing: Coldflow;

Technical standards: ABNT NBR IEC 60079-0/1/7/31, NBR IEC 60529;

Obs: Feature cold flow by diaphragm.

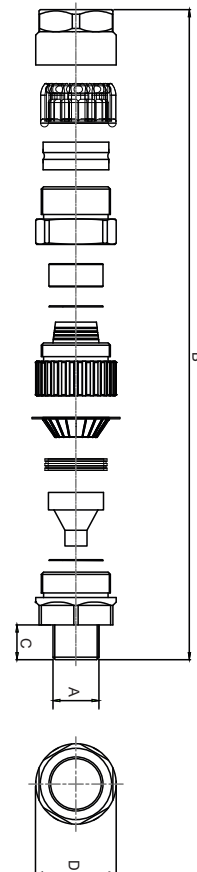
Marcação / Ex mark	
Gases	Ex eb IIC Gb Ex db IIC Gb
Pó / Dusty	Ex ta IIC Da
Grau de proteção / Protection degree	
IP66/IP68 (até 5 Bar) Alumínio / (up to 5 Bar) Aluminium	
IP66W/IP68W (até 5 Bar) Aço inox, e latão niquelado (up to 5 Bar) Stainless steel and nicked brass	
Zonas / Zones	
1, 2, 20, 21 e 22	
Temperatura de operação / Operating temperature	
-40°C ≤ Ta ≤ +100°C	

Tipo Type	Código Code	Rosca Thread (A)	Diâmetro dos cabos permitidos / Permitted cable diameter				(mm)		
			Anel de vedação menor Smaller sealing ring (mm)		Anel de vedação maior Larger sealing ring (mm)		(B)	(C)	(D)
			Mínimo Minimum	Máximo Maximum	Mínimo Minimum	Máximo Maximum			
Métrica	MPC160M020P□	M20 P	6,0	12,0	9,5	16,0	63	20	26
	MPC160M0020□	M20	8,0	14,0	12,5	21,0	64	20	32
	MPC160M0025□	M25	10,5	19,5	16,5	25,0	66	20	36
	MPC160M025P□	M25 P	8,0	14,0	12,5	21,0	64	20	32
	MPC160M0032□	M32	17,0	27,0	22,0	33,5	78	20	46
	MPC160M0040□	M40	22,5	32,5	28,0	41,5	79	20	56
	MPC160M0050□	M50	28,0	44,5	36,0	52,5	83	20	66
NPT /BSP	MPC160N012P□	½" P	6,0	12,0	9,5	16,0	63	20	26
	MPC160N0012□	½"	8,0	14,0	12,5	21,0	64	20	32
	MPC160N034P□	¾" P	8,0	14,0	12,5	21,0	64	20	32
	MPC160N0034□	¾"	10,5	19,5	16,5	25,0	66	20	36
	MPC160N001P□	1" P	10,5	19,5	16,5	25,0	66	20	36
	MPC160N0001□	1"	17,0	27,0	22,0	33,5	78	20	46
	MPC160N114P□	1 ¼" P	17,0	27,0	22,0	33,5	78	20	46
	MPC160N0114□	1 ¼"	22,5	32,5	28,0	41,5	79	20	56
	MPC160N112P□	1 ½" P	22,5	32,5	28,0	41,5	79	20	56
	MPC160N0112□	1 ½"	28,0	44,5	36,0	52,5	83	20	66
	MPC160N002P□	2" P	28,0	44,5	36,0	52,5	83	20	66

M = Métrica / Metric
N = NPT ou/or B = BSP

6 = Aço Inox 316 / Stainless steel 316
1 = Aço Inox 316L / Stainless steel 316L
N = Latão Niquelado / Nicked brass
A = Alumínio / Aluminium

DESENHO DIMENSIONAL DIMENSION DRAWING (mm)



P = Pequeno / Small
G = Grande / Big
E = Especial / Special

Em função da capa externa do cabo
Depending on the outer jacket of the cable

Exemplo para prensa cabo com acessórios / Example for cable gland with accessories:

MPC160M0032□ + □
Prensa cabo escolhido
Cable gland selected

- 001 = Anel de vedação externo
External sealing ring
- 002 = Contra porca + Anel de vedação externo
Lock-nut + External sealing ring
- 003 = Contra porca + Anel de vedação externo + Arruela serrilhada
Lock-nut + External sealing ring + Serrated washer
- 004 = Contra porca + Anel de vedação externo + Anel de aterramento
Lock-nut + External sealing ring + Ground ring
- 005 = Contra porca + Anel de vedação externo + Arruela serrilhada + Anel de aterramento
Lock-nut + External sealing ring + Serrated washer + Ground ring